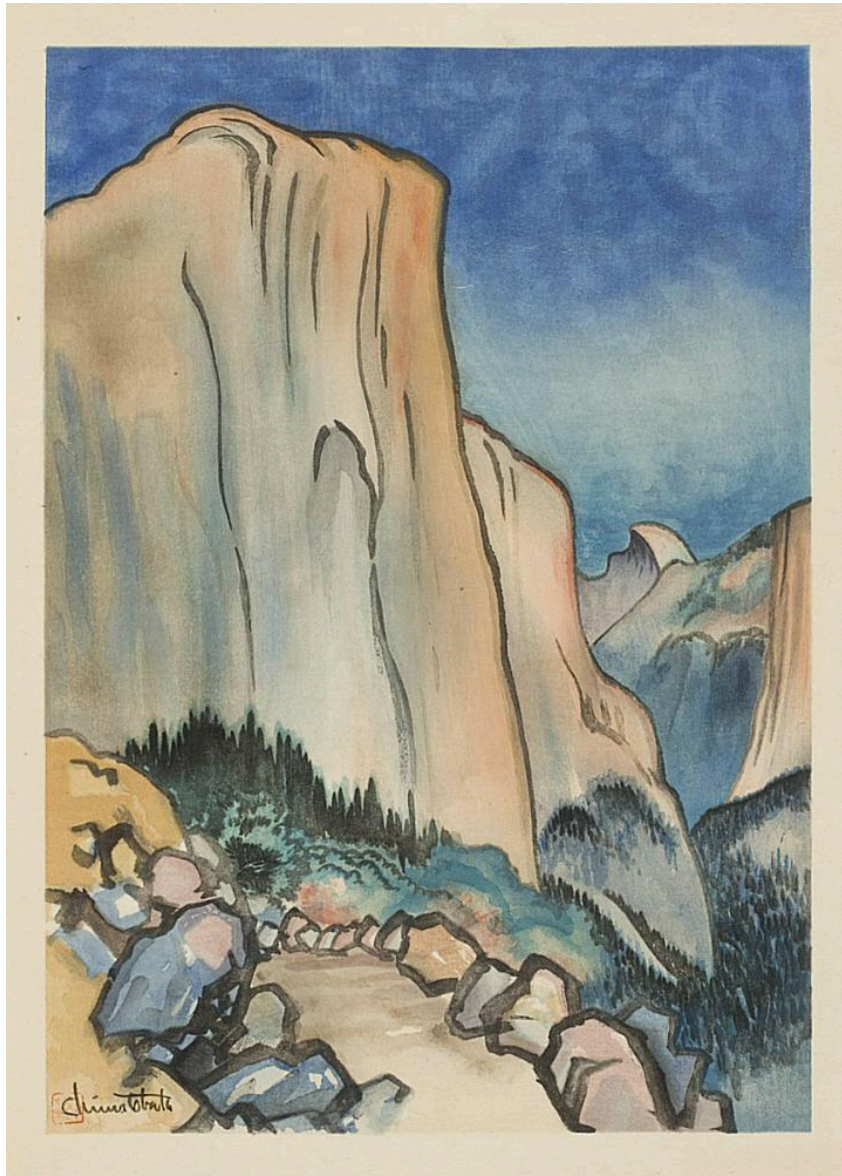
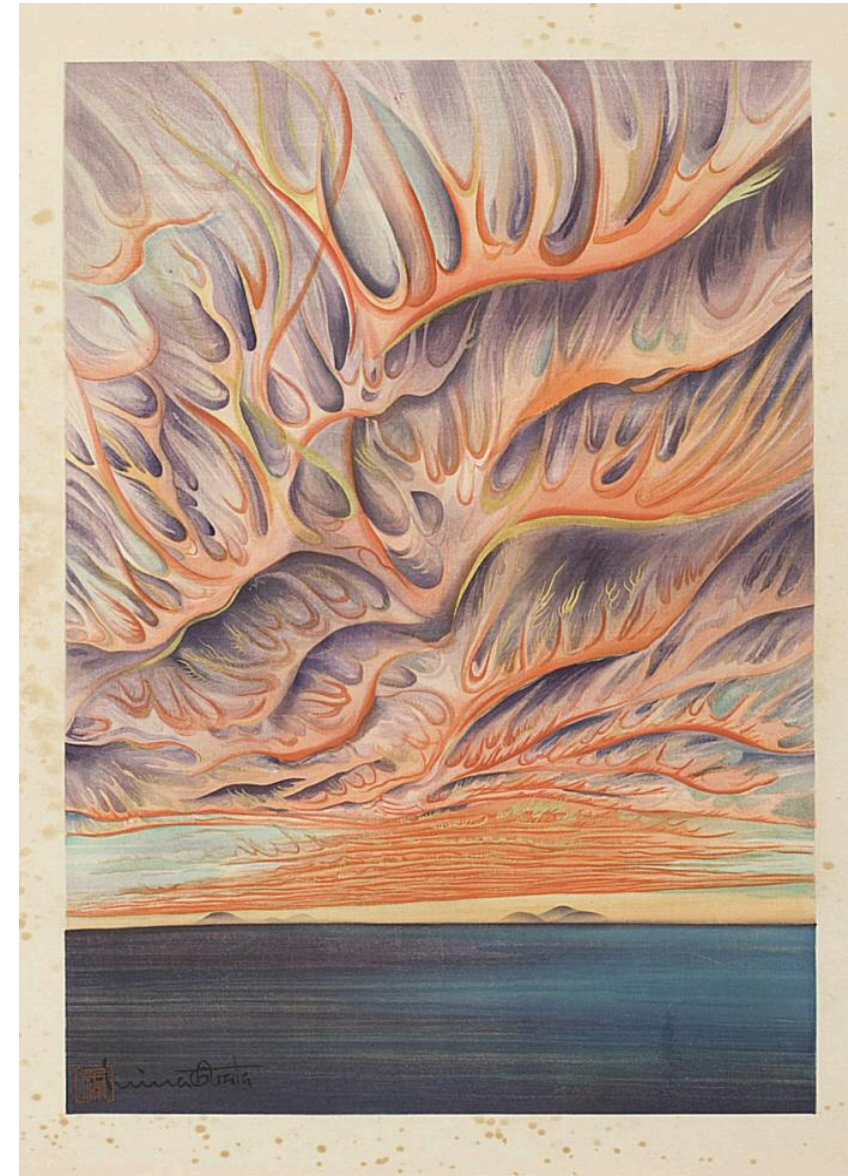


# Chiura Obata Landscape Artworks

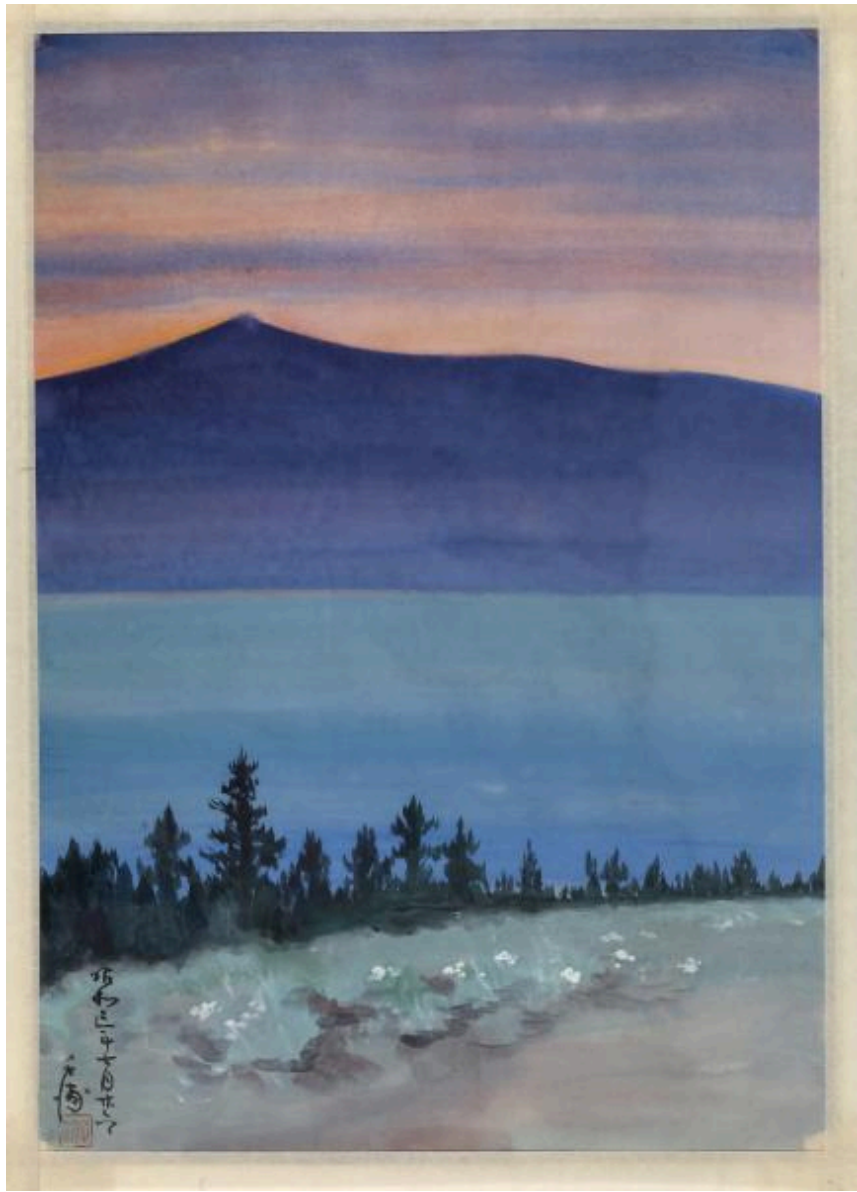


**El Capitan: Yosemite National Park, California** 小圃千浦筆「ヨセミテ国立公園 エル・カピタン」版画 1930年

Artist: Chiura Obata (Japanese, 1885 - 1975) Date: 1930, Woodblock print, Ink and colors on paper, Gift of Dr. Stephen A. Sherwin and Merrill Randol Sherwin Object Number: 2010.13



*Setting Sun on Sacramento Valley, California, U.S.A.*, Chiura Obata (Japanese, 1885 - 1975), 1930 Woodcut print Materials: Ink and colors on paper Gift of Dr. Stephen A. Sherwin and Merrill Randol Sherwin, 2010.12

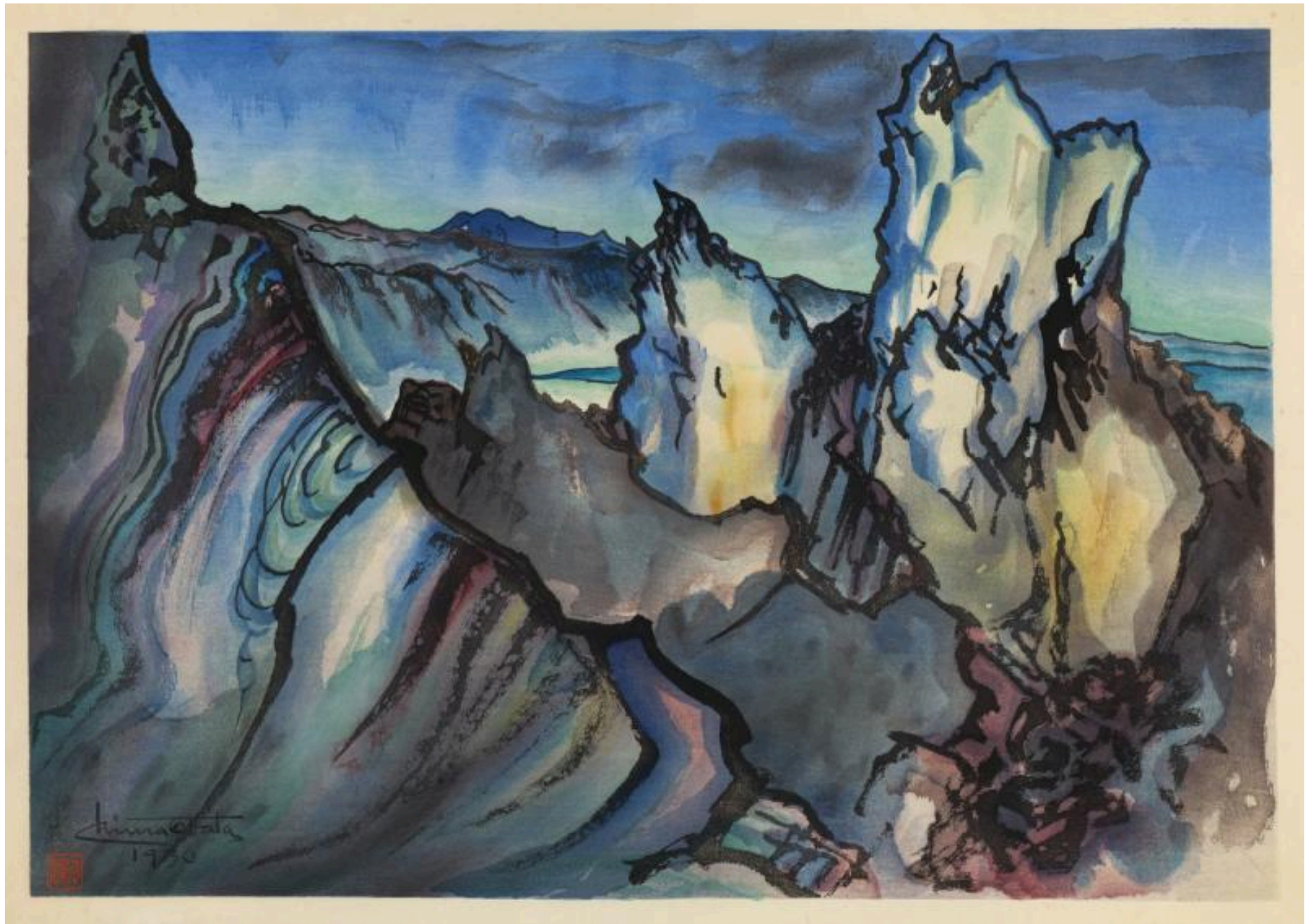


Chiura Obata, *Evening Glow at Mono Lake*, n.d., watercolor on paper, Smithsonian American Art Museum, Gift of the Obata Family, 2005.17.3, © 1989, Yuri Kodani



Chiura Obata, *Evening at Carl Inn (progressive proof No.64)*, 1929-1930, color woodcut on paper, Smithsonian American Art Museum, Gift of the Obata Family, 2005.17.66, © 1989, Yuri Kodani

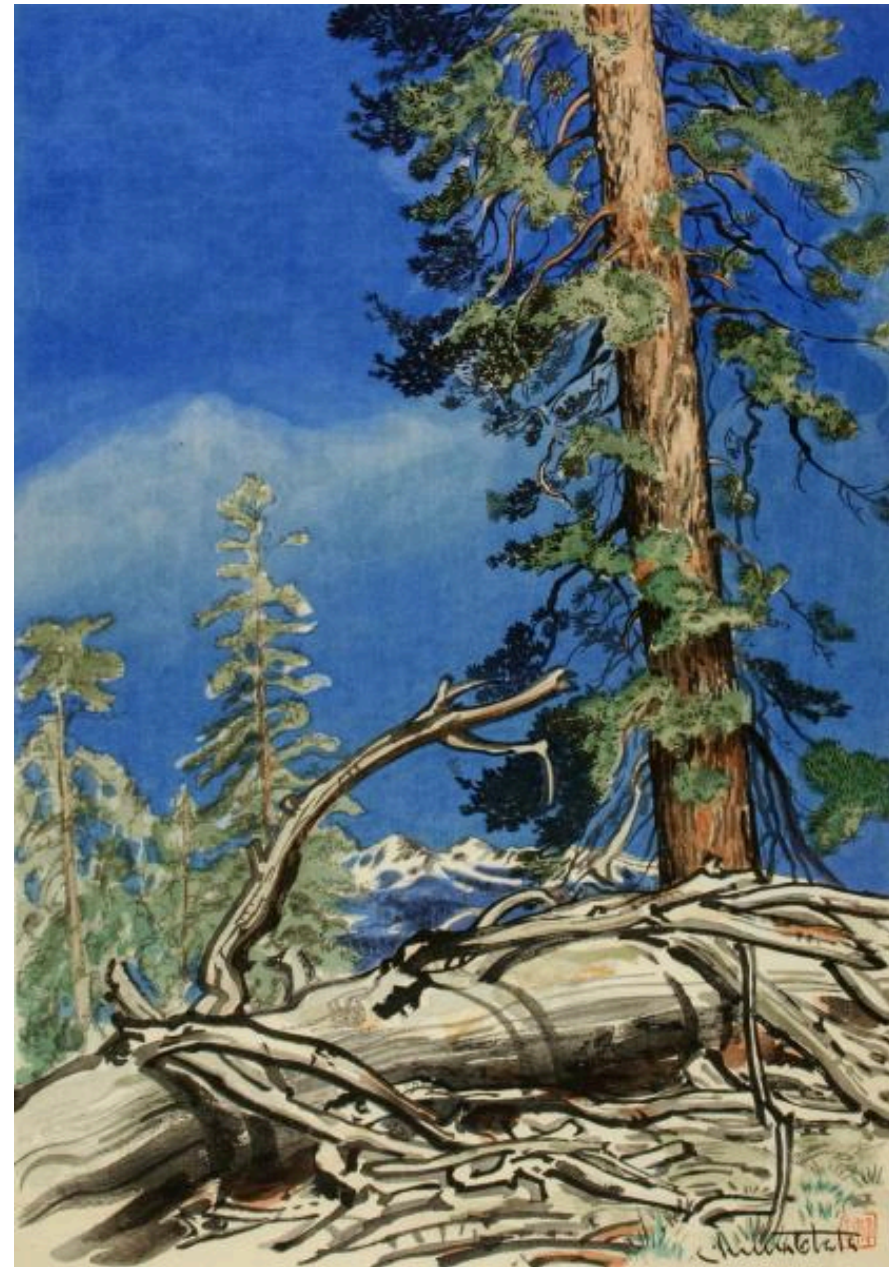








Chiura Obata, *Rainbow Falls, Inyo National Forest*, 1930, color woodcut on paper, Smithsonian American Art Museum, Gift of the Obata Family, 2000.76.21, © 1989, Lillian Yuri Kodani



Chiura Obata, *Life and Death, Porcupine Flat*, 1930, color woodcut on paper, Smithsonian American Art Museum, Gift of the Obata Family, 2000.76.3, © 1989, Lillian Yuri Koda